



21

General Agent

5/2 A.M. 10. now Eugene Vinke

Rotterdam. 132.2.18.

(Handwritten signature inside a circle)

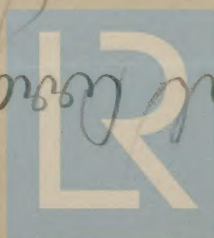
RETAIN

23 SEP 1948

Rotterdam

5/2 A.M. 10.

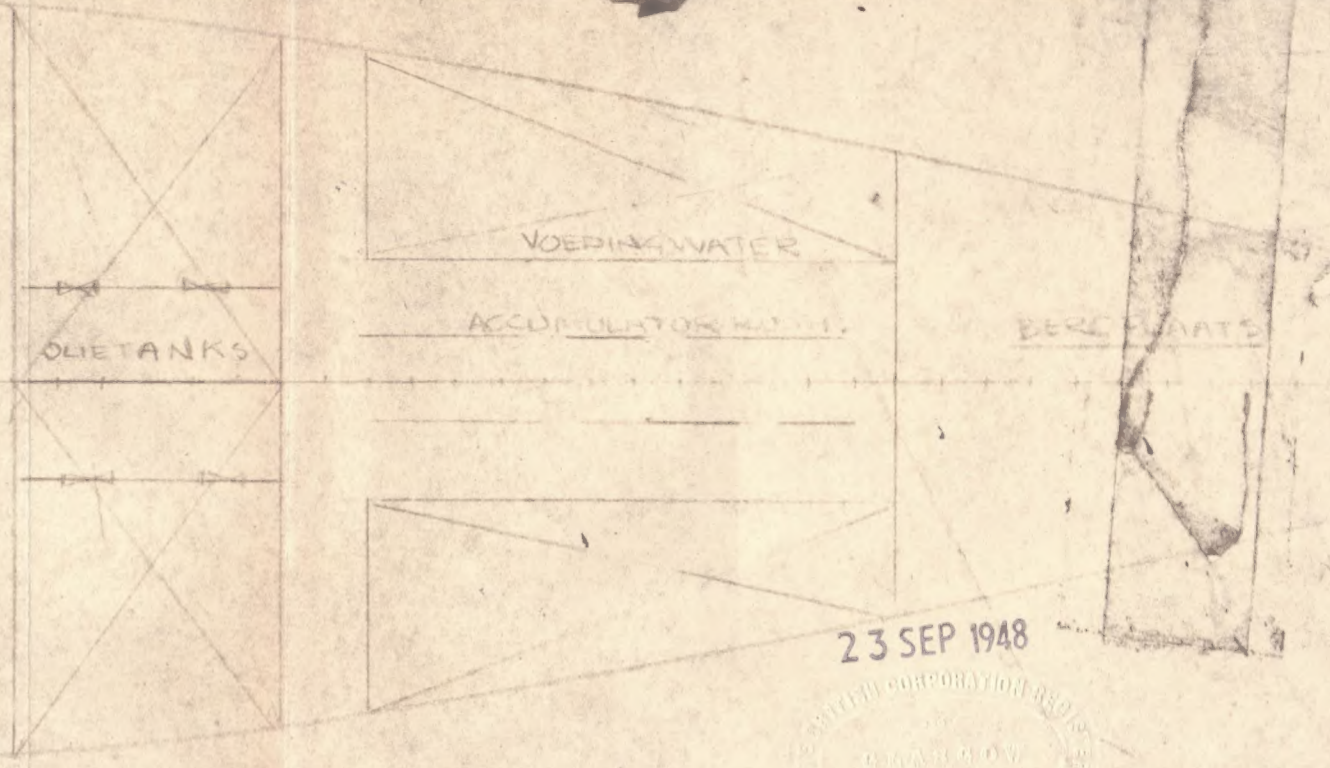
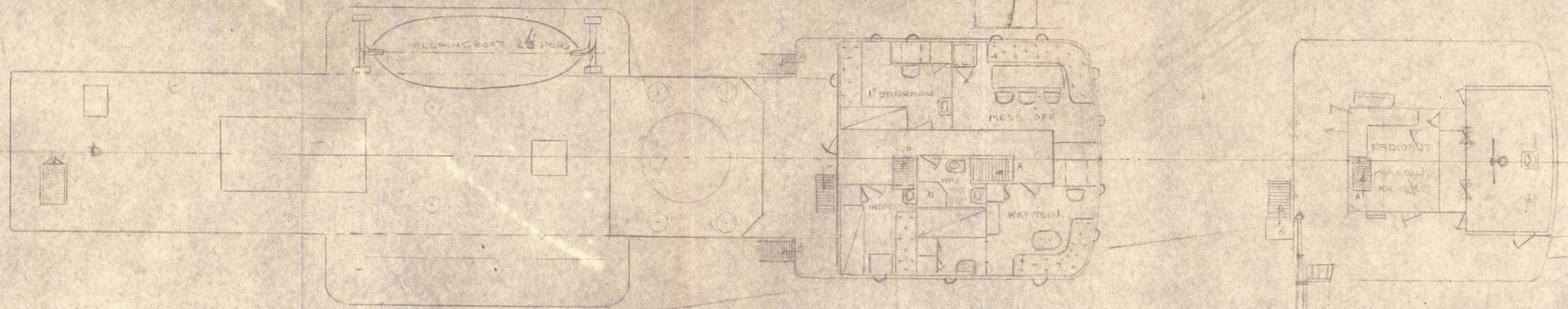
General Agent



© 2020

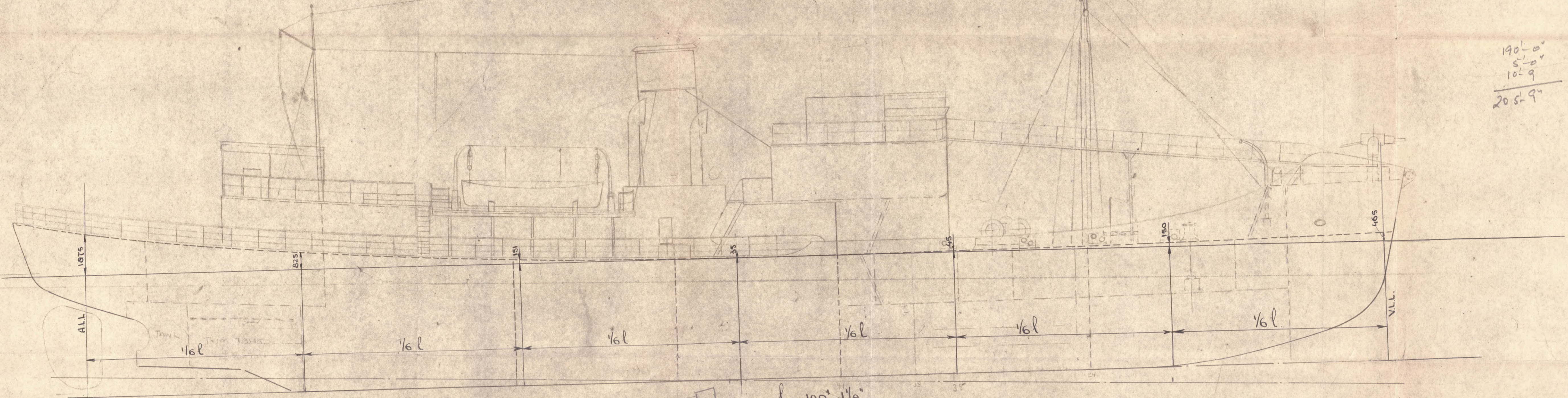
Lloyds Register Foundation

003948-003957-0178

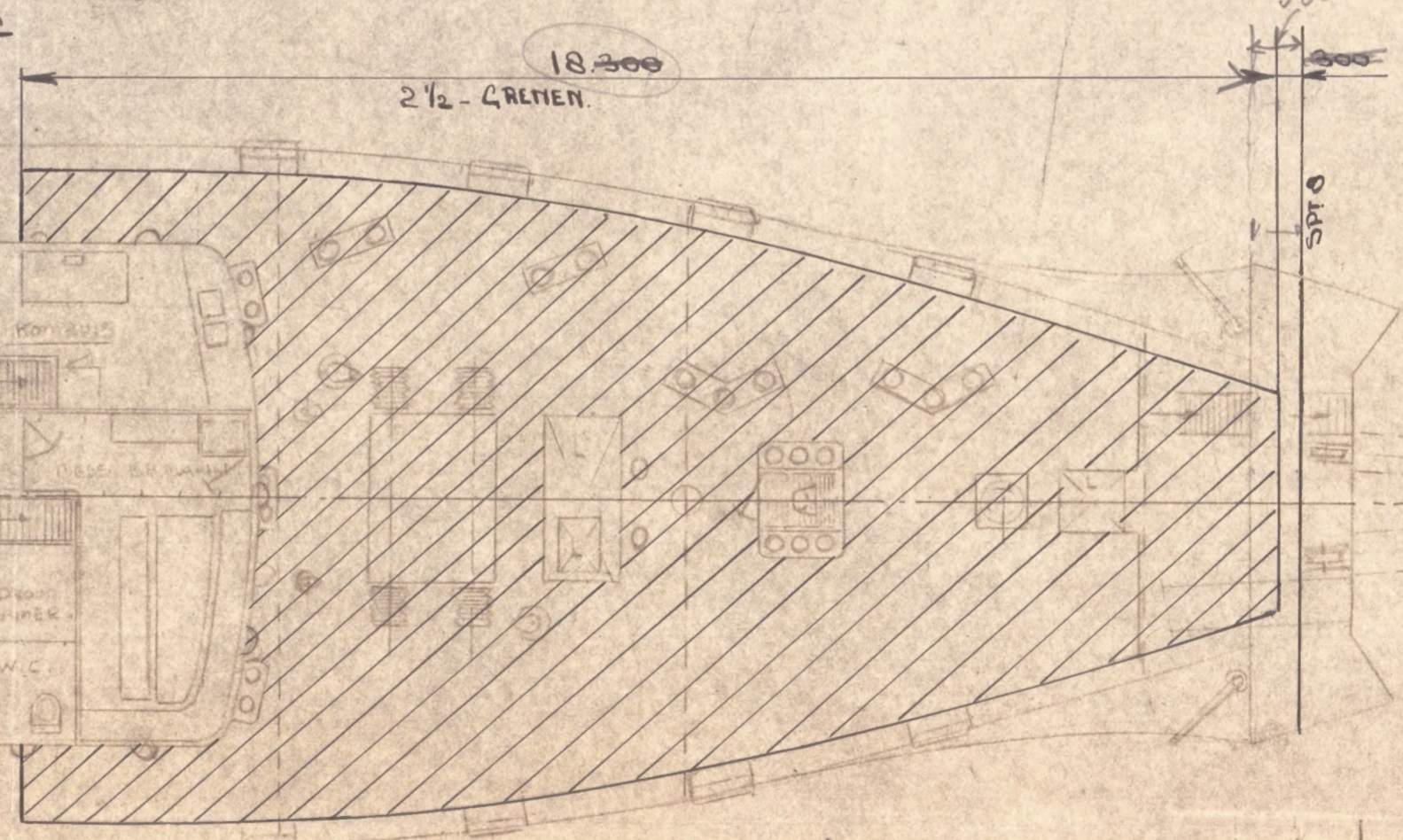
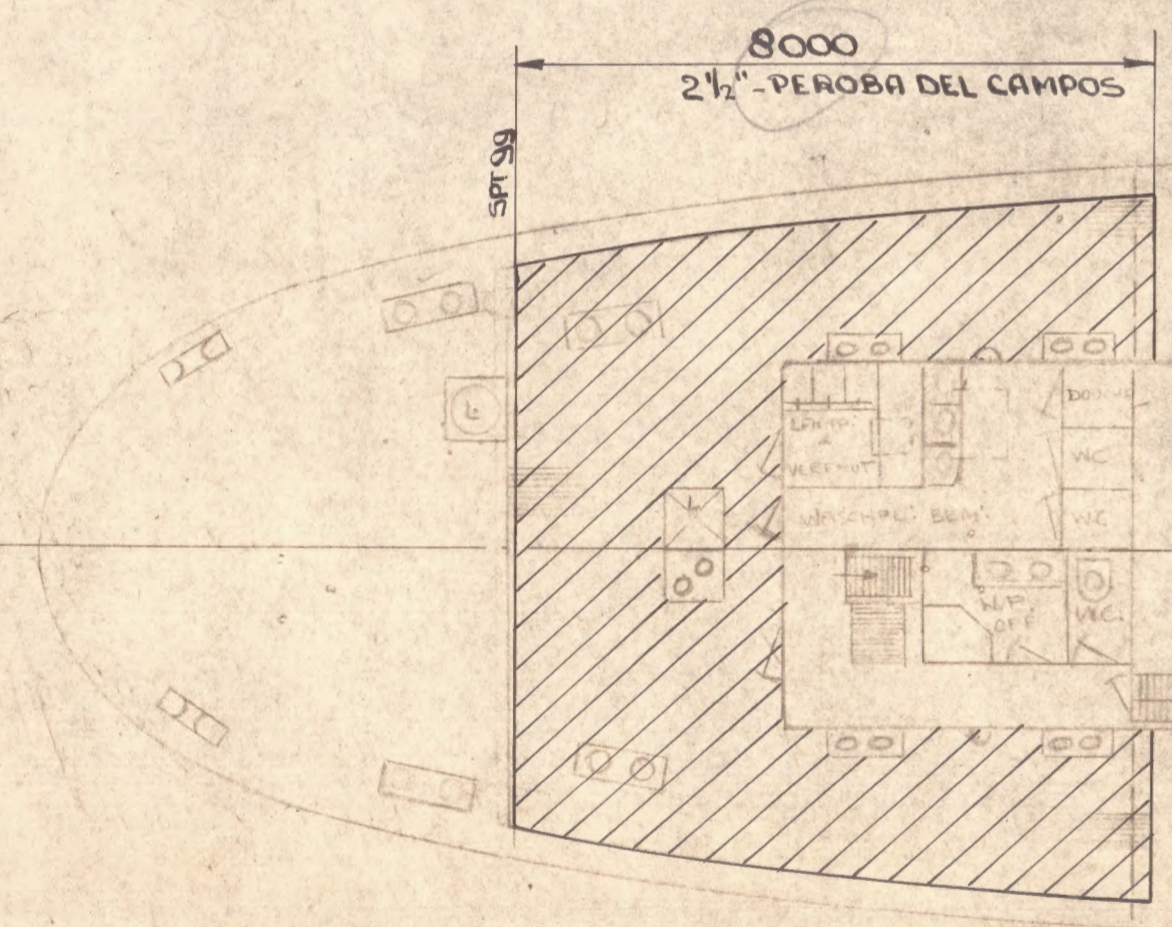


23 SEP 1948

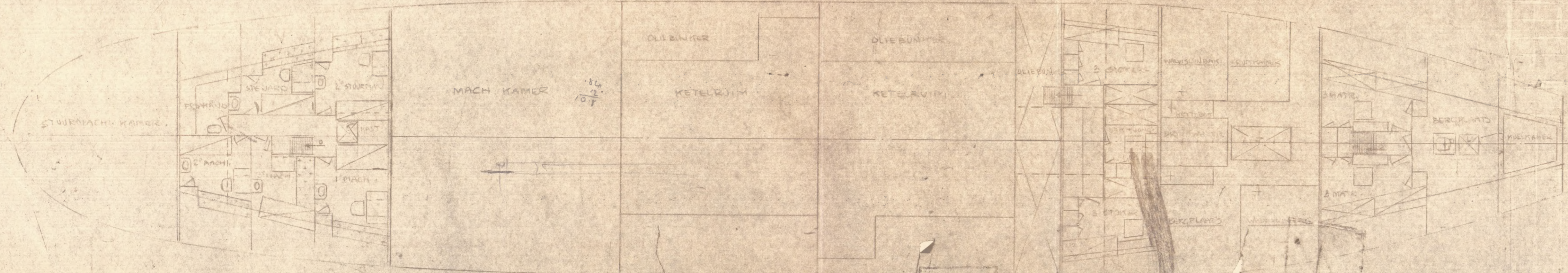
190'-0"
5'-0"
10'-9"
205'-9"



$l = 190' - 11\frac{1}{2}"$
CAMBER = 195 $\frac{1}{8}$ "



75
1263
6237
7.13
7.32
7
51.24
25
7.32
205
5.27
41.43
46.700
1.02
47.72
25
47.97
71.65



BENAMING	ONDERDEEL	MATERIAAL	<p>BC OPMERKING 15 Sep. 1948</p>	GEW. IN KG PER STUK	POST
SCHAAL	1/20	DATUM		AMST. DROOGDOK MIJ. N.V.	
GETEK.					
GECALQ.					
GEZIEN					
GEWIJZ.					
VOOR BEW. TEK. ZIE N.785	NIEUWBOUW				
TEK. No:			P. 1050	Lloyd's Register	A1

003948-00493-0148

"Eugene Vinko"

Rudder

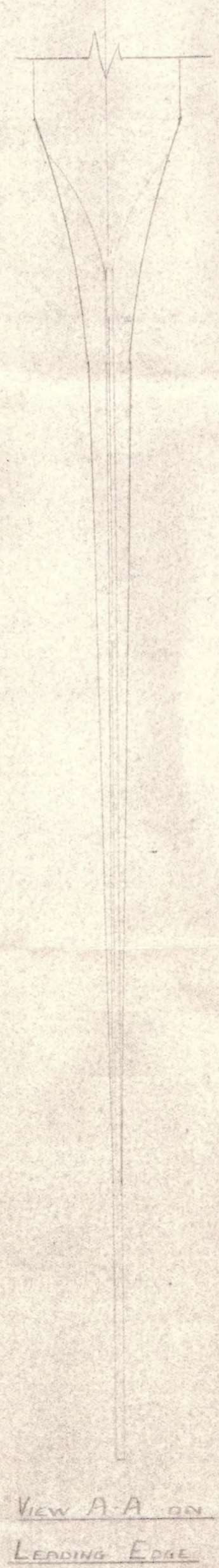
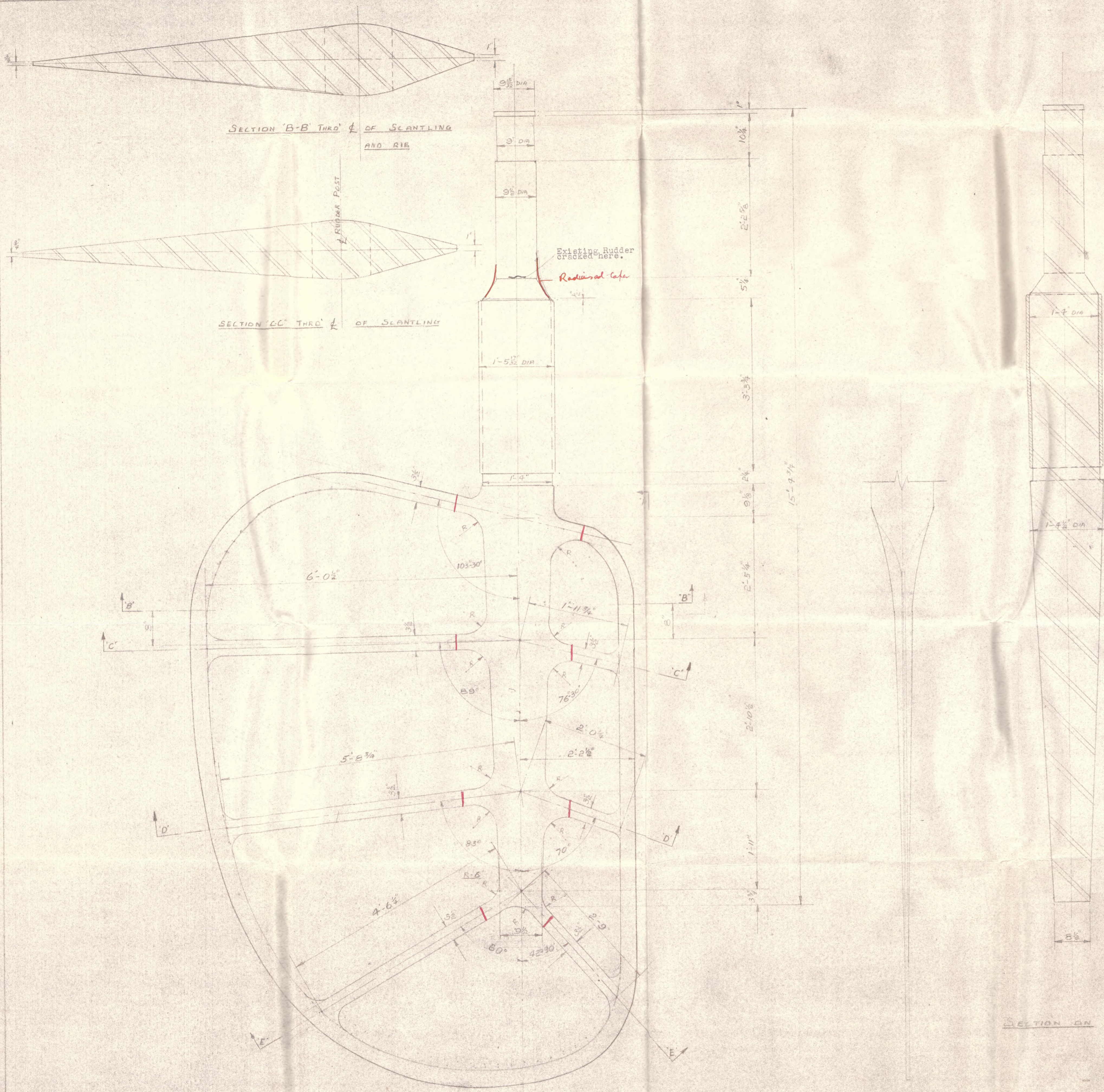
Eugene Vinko



© 2020

Lloyd's Register
Foundation

003948-003957-0196



SECTION ON \perp See cable
Ad
 21.8.51

RED LINES INDICATE PROPOSED WELD POSITIONS
 NEW STOCK TUBE FORGED STEEL, AND EXISTING ARMS USED

DETAILS OF EXISTING RUDDER
 ON
 A.M. 10

GLOBE ENGINEERING WORKS LTD.		w/o 9313
SCALE 1"=1'-0"		© 2020
DESIGNED	AJAROBERTS 16-8-51	10/16/59
DRAWN		
CHECKED		
APPROVED		

"Eugene VuRe"

Rudder

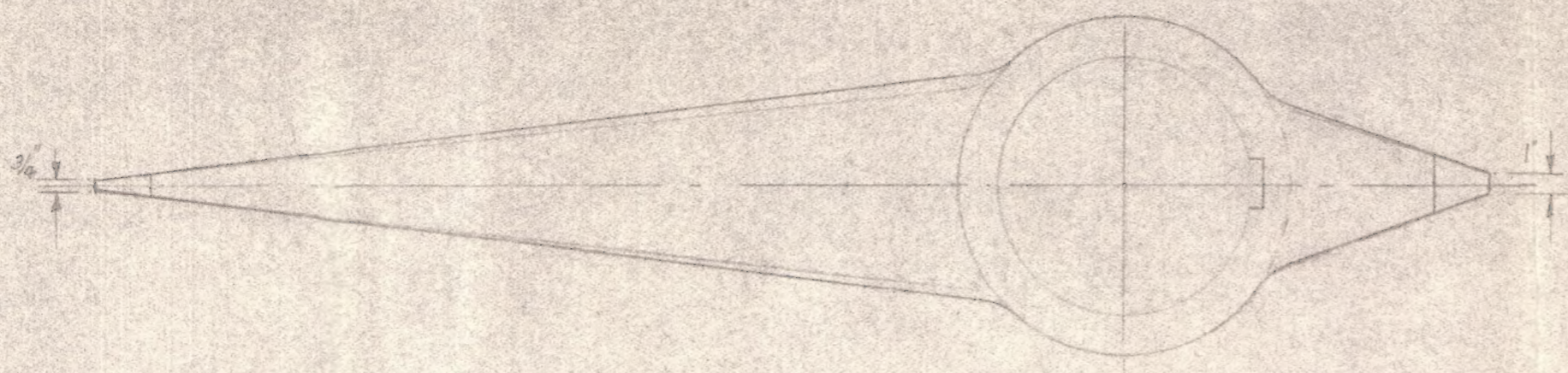
Eugene VuRe



© 2020

Lloyd's Register
Foundation

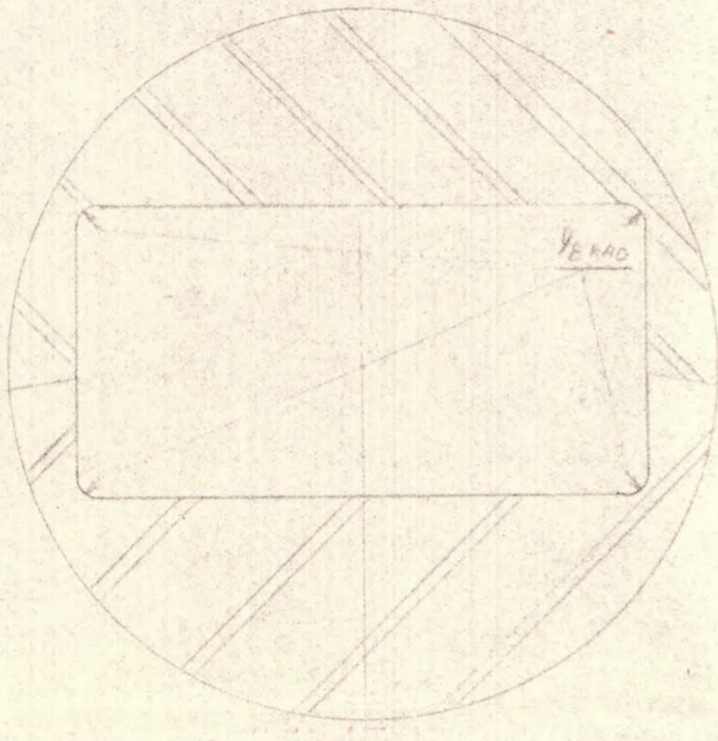
003948-003957-0197
755600-849600



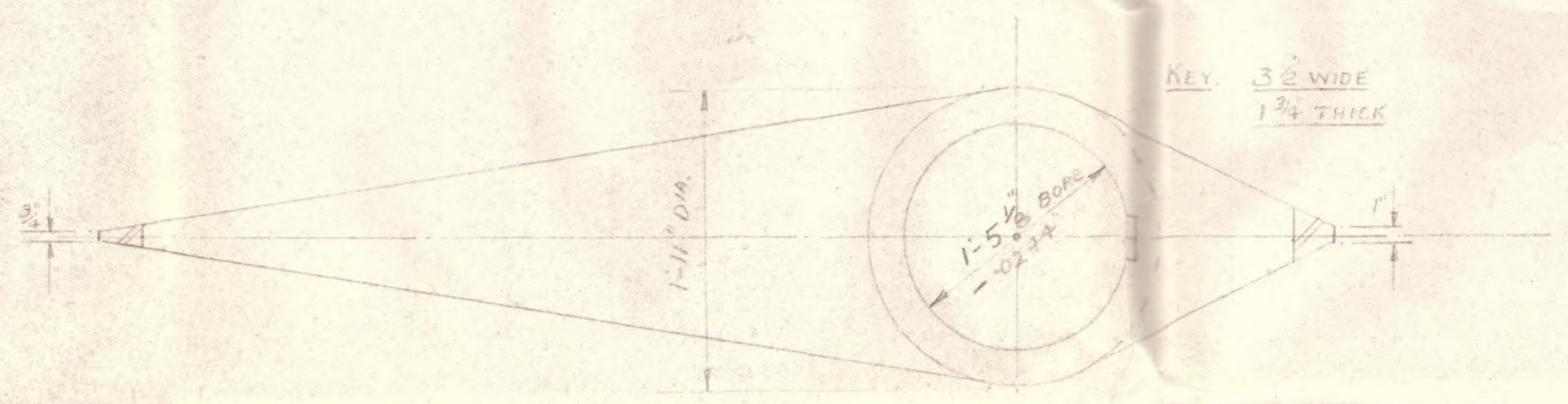
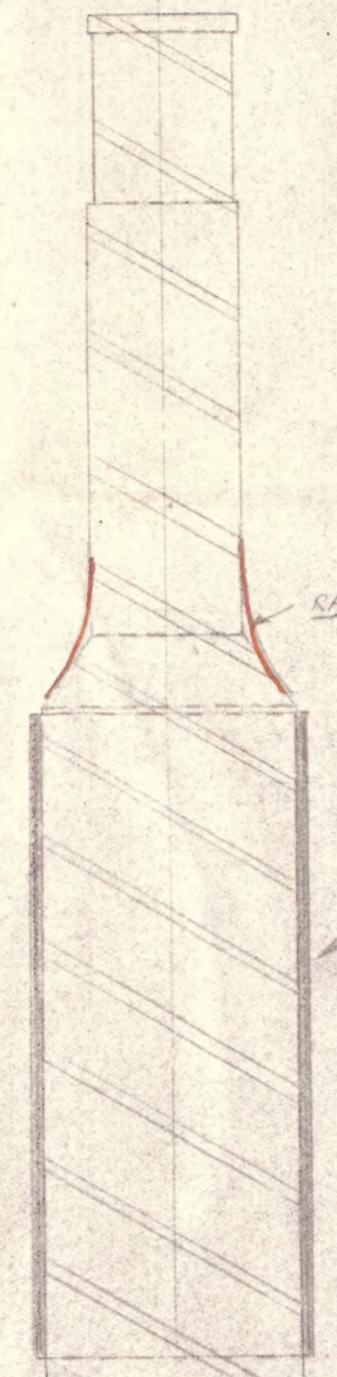
ALTERNATIVE ARMS (BOSS PARTLY OUTSIDE PLATE)



VIEW ON C-C



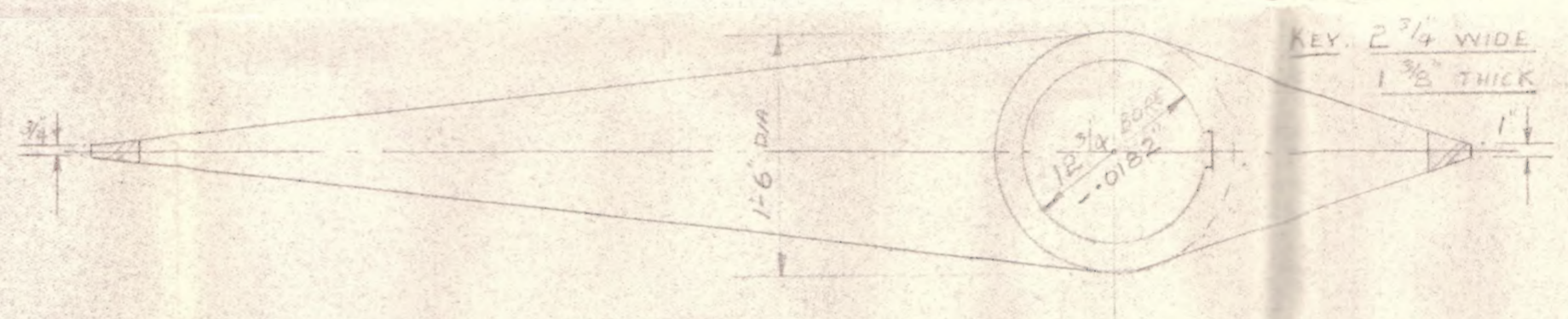
SCRAP SECTION SHOWING KEYWAY RADII FULL SIZE



VIEW ON B-B



VIEW ON G-G



VIEW ON D-D



VIEW ON E-E

IN ABOVE VIEWS STOCK OMITTED FOR CLARITY

NOTE! ALL OTHER DIMENSIONS SHOWN ON DRG 469
 SHRINKAGE ALLOWANCE BORE = STOCK DIA - 1/60 OF STOCK DIA
 BOSS DIAMETERS TAPERED DIAMETERS GIVEN ARE AT INTERSECTION POINTS AS SHOWN
 KEYWAYS: A RADIUS OF AT LEAST 1/8 MUST BE LEFT IN THE CORNERS OF ALL KEYWAYS. SEE DETAIL
 WHERE THE TAPERED PORTION OF THE STOCK MEETS THE PARALLEL PART IT MUST NOT BE UNDER CUT

RED LINES INDICATE PROPOSED WELD POSITION.
 ARMS & STOCK FORGED STEEL.

See call
 21.8.51

PROPOSED ALTERATION TO
 RUDDER ON A.M. 10.

GLOBE ENGINEERING WORKS LTD

DESIGNED BY	ATARD BEATS
DRAWN BY	ATARD BEATS
CHECKED BY	
DATE	



Lloyd's Register
 Foundation